

UC Irvine

Western Journal of Emergency Medicine: Integrating Emergency Care with Population Health

Title

President's Message May 2013

Permalink

<https://escholarship.org/uc/item/6q90219z>

Journal

Western Journal of Emergency Medicine: Integrating Emergency Care with Population Health, 14(3)

ISSN

1936-900X

Author

Mills, Trevor

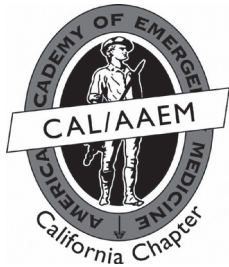
Publication Date

2013

Copyright Information

Copyright 2013 by the author(s). This work is made available under the terms of a Creative Commons Attribution-NonCommercial License, available at <https://creativecommons.org/licenses/by-nc/4.0/>

Peer reviewed



PRESIDENT'S MESSAGE

May 2013



h, spring is in the air, with summer just around the corner. A wonderful time to reflect on the state of our State Chapter.

Our chapter's education endeavors continue to thrive. This year our chapter sponsored the very successful San Francisco Speakers Series in the Fall, the Pediatric pre-conference course at the 19th Annual AAEM Scientific Assembly in Las Vegas and the Orange County Speakers Series. The OC Speakers Series brought together the community and academic emergency physicians in SoCal and includes networking opportunities and 3 amazing speakers: Ghazala Sharieff, MD MBA FAAEM FACEP Professor of Pediatric Emergency Medicine at the University of California, San Diego; J. Christian Fox, MD RDMS FAAEM Professor of Clinical Emergency Medicine at the University of California, Irvine; Michael Menchine, MD MPH Associate Professor at the University of Southern California. The event was held on April 18, 2013, at the Orange County Medical Association center. If you don't have the time to make one of our sponsored events, don't forget that education is available online via our LLSA training modules on the www.calaaem.org website.

The CAL/AAEM chapter mission continues to support the independent emergency physician. If you

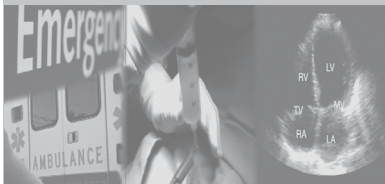
are experiencing issues regarding workplace fairness, don't forget our chapter's free introductory legal advisory service for workplace fairness issues. If you have a regional or statewide concern about the current practice of emergency medicine, contact us as well. We strive to be the champions of EM for you, our members.

Speaking of members, our state chapter membership is at an all time high. This includes full voting members, associate members (those who have just matriculated from an EM residency yet not taken the boards), resident members and student members. At the last CAL/AAEM board meeting, we voted to extend the duration of the associate membership, thus allowing recent grads to get a cost break and extended membership. We have had an increase in the number of "all in" California EM residency programs, and due to the diligence of our resident representatives



INSIDE:

- 3** Medical Disability
Borgia



(Deena Ibrahim and Randy Woo) we now have many medical students involved in, CAL/AAEM.

California EM programs with 100% resident membership in CAL AAEM:

- ▣ David Geffen School of Medicine at UCLA
- ▣ LAC + USC Medical Center
- ▣ Stanford University Hospital
- ▣ University of California San Diego Medical Center
- ▣ University of California San Francisco
- ▣ University of California - Irvine

This being the great state of California, we would be amiss if we were not a leader in social media. Please check out our revamped CAL/AAEM website. Consider

interacting with the board and other CAL/AAEM members by, “tweeting” using the CAL/AAEM twitter account or “like” us on Facebook. As always Brian Potts, MD MBA FAAEM (past president of CAL/AAEM) does a great job keeping everyone up to date one with our news via our state chapter’s news service. Membership forms, speaker series registration, news service archives, past president Messages, and newsletters are also available on the chapter webpage.

- ▣ Email: info@calaaem.org
- ▣ Web: www.calaaem.org
- ▣ Facebook: www.facebook.com/CALAAEM
- ▣ Twitter: www.twitter.com/CALAAEM

Thanks as always for your support of our chapter.

Sincerely,

Trevor Mills, MD MPH FAAEM, and President of CAL/AAEM

Board Members of the California Chapter of the American Academy of Emergency Medicine 2012-2013

Board Members At Large

John Christensen, MD, FAAEM
 Lisa Mills, MD, FAAEM
 Joanne Williams MD, FAAEM
 Keith Yablonicky, MD, , FAAEM

Resident Representatives

Randy Woo, MD
 Deena Ibrahim, MD

President

Trevor Mills, MD, MPH, FAAEM

Vice President

Jennifer L. Kanapicki, MD, FAAEM

Secretary

Sandra Thomasian, MD, FAAEM

Treasurer

Shahram Lotfipour, MD, MPH, FAAEM

Immediate Past President

Trevor Mills, MD, MPH, FAAEM

Past Presidents

Brian Potts, MD, MBA, FAAEM
 Ingrid Lim, MD, FAAEM
 Stuart Swadron, MD, FAAEM
 Steven Gabaeff, MD, FAAEM
 A. Antoine Kazzi, MD, FAAEM
 Shahram Lotfipour, MD, MPH, FAAEM
 Robert Rodriguez, MD, FAAEM
 Francine Vogler, MD, FAAEM

CAL/AAEM Contact

AAEM Liason: Marcia Blackman, 555 East Wells St., Suite 1100, Milwaukee, WI 53202, www.calaaem.org, (800) 884-2236

Statements expressed in this journal are those of the authors and do not necessarily reflect those of the editors, the editorial board, the American Academy of Emergency Medicine, or the California Chapter of AAEM.